



GMT MONTHLY MEMBERSHIP PROGRESS REPORT

Results as of: 6/30/2018

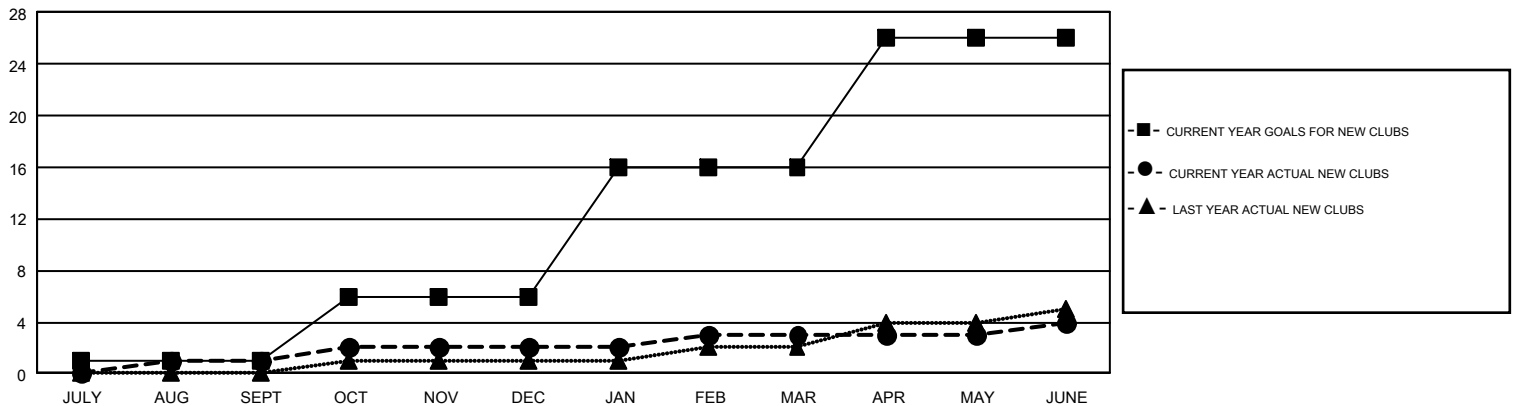
GMT Constitutional Area 4, Group A

GMT: ANTTI FORSELL

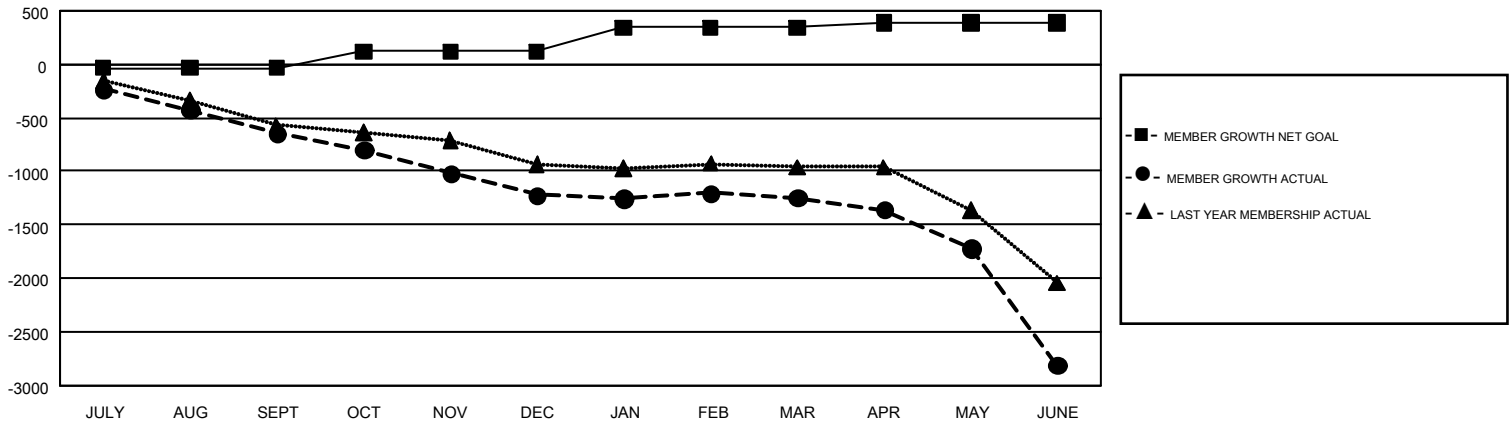
REPORT DOES NOT INCLUDE CLUBS IN UNDISTRICTED AREAS.

Clubs				Members			
RESULTS FOR 2017-2018				RESULTS FOR 2017-2018			
QUARTER	NEW CLUB GOAL	NEW CLUBS	DROPPED CLUBS	QUARTER	MEMBER GROWTH NET GOAL	MEMBER GROWTH ACTUAL	DROPPED MEMBERS ACTUAL (including transfers)
JULY/AUG/SEPT	1	1	19	JULY/AUG/SEPT	-35	471	1,011
OCT/NOV/DEC	5	1	11	OCT/NOV/DEC	155	770	1,279
JAN/FEB/MAR	10	1	9	JAN/FEB/MAR	223	1,127	1,031
APR/MAY/JUNE	10	1	20	APR/MAY/JUNE	44	813	2,253

GOALS AND ACTUAL NEW CLUBS CUMULATIVE



GOALS AND ACTUAL MEMBERS CUMULATIVE



DROPPED CLUBS: 59	1,236 CLUBS OF 2,249 ADDED 1 OR MORE NEW MEMBERS	GENDER DISTRIBUTION MALE 40,751 (78.52%) FEMALE 11,147 (21.48%)
DROPPED MEMBERS DECEASED 579 CLUB CANCELLED 268 OTHER 4,727 TOTAL 5,574	CLICK HERE FOR CUMULATIVE MEMBERSHIP DATA	TOTAL FAMILY UNIT MEMBERS 0 FAMILY MEMBERS PAYING HALF DUES 0